



**INPUT**

FORT WORTH, TEXAS

**USA**  
**1999**

# Welcome

President of INPUT

## Greetings from Enrique Nicanor President of INPUT

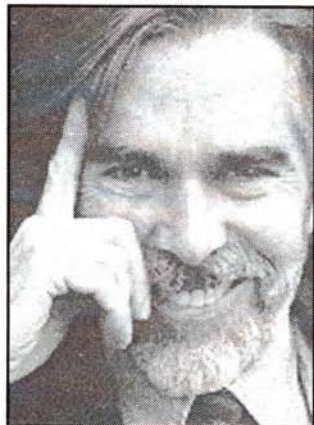
INPUT was born as an American-European joint venture 22 years ago and is hosted traditionally one year in each side of the Atlantic. INPUT '97 (France) and INPUT '98 (Germany) were consecutively hosted in Europe, that's why returning to America and to Fort Worth means for many of us the satisfaction of keeping a sensible tradition and, at the same time, offering the opportunity of updating the half-American spirit of INPUT.

INPUT is not a festival. INPUT is not a market. INPUT doesn't give awards.

INPUT is a lively and multicultural ceremony performed and addressed toward program makers working actively in the public interest producing the kind of television that serves and challenges the audiences with intelligent stories.

We don't make differences between genres, timing, size of the budget or broadcasting company. We just look for that quality which defines what public television must be.

On behalf of the organizations and individuals who contribute to develop a honest, intelligent and challenging public television through INPUT, I welcome you to INPUT '99.



*Enrique Nicanor*

# INPUT '99

**Special Evening Programs**

## **Monday**

### **Looking East Viewing Room A 7 p.m. – 9 p.m.**

The INPUT experience is spreading throughout the world, with the Balkans, Africa, Eastern Europe and Central Asia becoming a larger part of our activities.

With this movement comes an increasing number of interesting programs that cannot possibly find a place in the regular sessions.

Still, the harvest is great, as a look at four films will reveal.

Host: Sergio Borelli, Italy

## **Tuesday**

### **Dark's INPUT on HDTV Viewing Room B 7 p.m. – 8:30 p.m.**

Will high definition television change the entertainment industry forever?

This is your opportunity to experience a leading industry expert's input on this new technology, and your chance to ask anything you've ever wanted to know about high definition production.

Randall Dark, founder, president

and CEO of HD Vision, the largest HD production and post facility in North America, shares his vision for the future of this technology.

Host: Randall Dark

## **Wednesday**

### **"The Party" Western Round Up & BBQ Billy Bob's Texas 7 p.m. – 12 a.m.**

Fort Worth may be much more cosmopolitan than when it began 150 years ago, but the wild, wild West can still be found in places.

This shindig, to be held at Billy Bob's Texas, the world's largest "honky tonk," promises to be a great evening where you can kick up your heels or just prop 'em up on the nearest table. The evening's events include "line dancing" lessons and professional bull riding.

Details: Shuttle busses will depart the Worthington Hotel for the Northside at 6:30 p.m. and will return guests to the hotel until midnight. Tickets for the event are \$25 per person and are available at the Grand Ballroom Level ticket table.

## Special Evening Programs

### Thursday

#### Is There Life

#### Outside Prime Time?

#### Viewing Room A

7 p.m.—9 p.m.

The battle for top ratings in prime time slots is taking place in television around the world. As these pressures intensify, schedules shorten and budgets tighten. The search for "hit" television shows can result in innovative programming, but more often than not, it doesn't.

While commercial stations have their own agenda, how can public service broadcasters afford the cost of remaining distinctive?

To illustrate how public service programmers react differently to this challenge, we will be showing excerpts of prime time programs from Canada, Germany, Hungary, Israel, Denmark, Ireland, Belgium, the United States and the United Kingdom.

#### Hosts:

Jenny Clayton, UK

Noemi Ben Natan Schory, Israel

Marie Wilson, Canada

Carl Otto Dethlefsen, Denmark

### Friday

#### Evaluation Session

#### Viewing Room A

6 p.m.—8 p.m.

We stand on the shoulders of those who've come before us. With that in mind, INPUT 2000 conference planners are depending upon your comments about INPUT '99 in order to improve next year's gathering. What went right? What could be improved? We're listening.

#### One For The Road

#### Grand Ballroom Foyer

8 p.m.

The INPUT 2000 organizers want to invite you to next year's conference in Halifax, Nova Scotia. The Halifax team is everyone's host for a taste of lobster and one last drink (or two).

# International Board

The members of the board are elected for four-year terms and are responsible for the continuity, planning and general policies of the conference. The members represent most of the major broadcasting nations that participate in the conference. They meet three times a year: autumn, spring and during the conference. The Board appoints the Shopstewards among the delegates.

## 1999 BOARD OFFICERS

### **Enrique NICANOR**

President  
United MEDIA, Spain  
Poniente, 62, Monte Alina, Pozuelo de Alarcón  
E-28223 Madrid, Spain  
Tel: (34) 1715-5447  
Fax: (34) 1351-1162  
e-mail: ENicanor@compuserve.com

### **Sergio BORELLI**

nt'l. Coordinator  
CIRCOM-INPUT  
Vicolo Moroni, 18  
00153 Roma  
Tel: (39) 6589-9262  
Fax: (39) 6583-40811  
e-mail: s.borelli@flashnet.it

### **Morten THOMTE**

Shopstewards Coordinator  
August Cappelensgate 3A  
0360 Oslo, Norway  
Tel: (47-22) 608 313  
Fax: (47-22) 608 313  
e-mail: mthomte@online.no

# Board Members

## BOARD MEMBERS

### Ralph ARLYCK

Timed Exposures  
79 Raymond Avenue  
12601 Poughkeepsie, NY, USA  
Tel: (1) 914-485-8489  
Fax: (1) 914-485-8489  
e-mail: raarlyck@vassar.edu

### Jane BALFOUR

Jane Balfour Films  
Burghley House  
35 Fortress Road  
London NW5 1AQ, UK  
Tel: (44) 171-267-5392  
Fax: (44) 171-267-4241  
e-mail: 106055.46@compuserve.com

### Patrice BARRAT

Z International  
24, rue du Mail  
75002, Paris  
France  
Tel: (33) 1-5340-9296  
Fax: (33) 1-5340-9297  
e-mail: pbarrat@calva.net

### Noemi BEN NATAN-SCHORI

Belfilms, Israel  
85 Ben Yehouda Street  
Tel-Aviv 63435, Israel  
Tel: (972) 3523-1161  
Fax: (972) 3523-5821  
e-mail: belfilms@netvision.net.il

### Con BUSHE

RTE, Ireland  
Donnybrook, Dublin 4  
Tel: (353) 1208-3239  
Fax: (353) 1208-2194  
e-mail: bushec@rte.ie

### Jenny CLAYTON

BBC, United Kingdom  
31, Marlborough Crescent, London W4 1HE  
Tel: (44) 181-994-9150  
Fax: (44) 181-994-9150

### Carl Otto DETHLEFSEN

Danish Broadcasting Corporation  
Cr TV-Byen  
2860 Soeborg, Denmark  
Tel: (45) 3520-4070  
Fax: (45) 3520-4044

### Claude GUIARD

INA, France  
4, Avenue de l'Europe  
94366 Bry-Sur-Marne, France  
Tel: (33) 1-4983-2800  
Fax: (33) 1-4983-3182  
e-mail: dpcr@ina.fr

### Gaétan LAPOINTE

Société Radio Canada  
1400 Blvd. René Levesque East  
Montreal, Quebec  
Canada H2L 2M2  
Tel: (1) 514-597-4386  
Fax: (1) 514-597-4599  
e-mail: lapointe@montreal.src.ca

### Teresa Montero ONTONDO

TV Cultura  
R. Cenzo Sbrighi, 378  
05036-900 Sao Paulo, Brazil  
Tel: (55) 1-1874-3400  
Fax: (55) 1-1861-0771

### Sandie PEDLOW

CPB, USA  
Culture, Drama & Arts  
901 East Street NW  
Washington, D.C.  
Tel: (1) 202-879-9737  
Fax: (1) 202-783-1019  
e-mail: spedlow@cpb.org

### Cynthia REYES

Project Evolution  
CBC  
P.O. Box 500, Station A  
Toronto, Ontario  
Canada M5W 1E6  
Tel: (1) 416-205-3356  
Fax: (1) 416-205-3756  
e-mail: c.reyes@sympatico.ca

### Peter SUETENS

VRT, Flanders  
Auguste Reyerslaan 52  
1043 Brussels  
Belgium  
Tel: (32) 2741-5546  
Fax: (32) 2741-4599  
e-mail: peter.suetens@vrt.be

# International Board

**Marie WILSON**

Canadian Broadcasting Corporation  
P.O. Box 160  
Yellowknife NWT X1A 2N2, Canada  
Tel: (1) 867-669-3501  
Fax: (1) 867-669-3574

**CO-OPTED  
MEMBERS****Jordi BALLO**

UPF  
La Rambla 30-32  
08002 Barcelona  
Spain  
Tel: (34) 3542-2287  
Fax: (34) 3542-2302  
e-mail: ballo\_jordi@caud.upf.es

**Kevin MARTIN**

KERA/KDTN Channel 13  
3000 Harry Hines Blvd.  
Dallas, Texas, 75201  
USA  
Tel: (1) 214-740-9280  
Fax: (1) 214-740-9211  
e-mail: kevin\_martin@kera.pbs.org

**Els BOVENLANDER**

Media Academy  
PREPUT Secretariat  
P.O. Box 2066  
Noorderweg 2, 1200 CB Hilversum  
The Netherlands  
Tel: (31) 3-5646-6262  
Fax: (31) 3-5646-6202

**Henry CAUTHEN**

South Carolina ETW  
1101 George Rogers Boulevard  
Columbia, SC 29201  
USA  
Tel: (1) 803-737-3240  
Fax: (1) 803-737-8298

**Alvaro FABRIZIO**

RAI  
Via Borgo S. Angelo, 23  
00193 Roma  
Italy  
Tel: (39) 6-6888-9199  
Fax: (39) 6-6888-9173  
e-mail: fabrizio@rai.it

**Hans-Geert FALKENBERG**

WDR  
Richartzstr 6-8, (Kaufhalle, Raum 344)  
D-50600 Koln  
Germany  
Tel: (49) 221-220-3405/2113  
Fax: (49) 221-220-3894  
e-mail: hans-geert.falkenberg@wdr.de

**Mike FENTIMAN**

BBC  
BBC Room G463  
White City 201 Wood Lane  
London W6  
UK  
Tel: (44) 181-752-4585  
Fax: (44) 181-752-4440  
e-mail: PandMFentiman@compuserve.com

**Larry LAUER**

TCU  
PO BOX 297070  
Fort Worth, Texas  
USA  
Tel: (1) 817-921-7808  
Fax: (1) 817-921-7272  
e-mail: l.lauer@tcu.edu

**Donald THOMS**

PBS  
1320 Braddock Place 22314-1698  
Alexandria, VA  
USA  
Tel: (1) 703-739-5010  
Fax: (1) 703-739-8440  
e-mail: dthoms@pbs.org

**Regina WYRWOLL**

Goethe-Institute  
Helene Weber Alle, 1  
80637 Munich  
Germany  
Tel: (49) 89-1592-1528  
Fax: (49) 89-1592-1450  
e-mail: wyrwoll@goethe.de

**Leonid ZOLOTAREVSKI**

Ostankino TV & Radio Centre  
12 Korolev Street  
Moscow 127427  
Russian Federation  
Tel: (7) 095-283-8552  
Fax: (7) 095-217-7500